

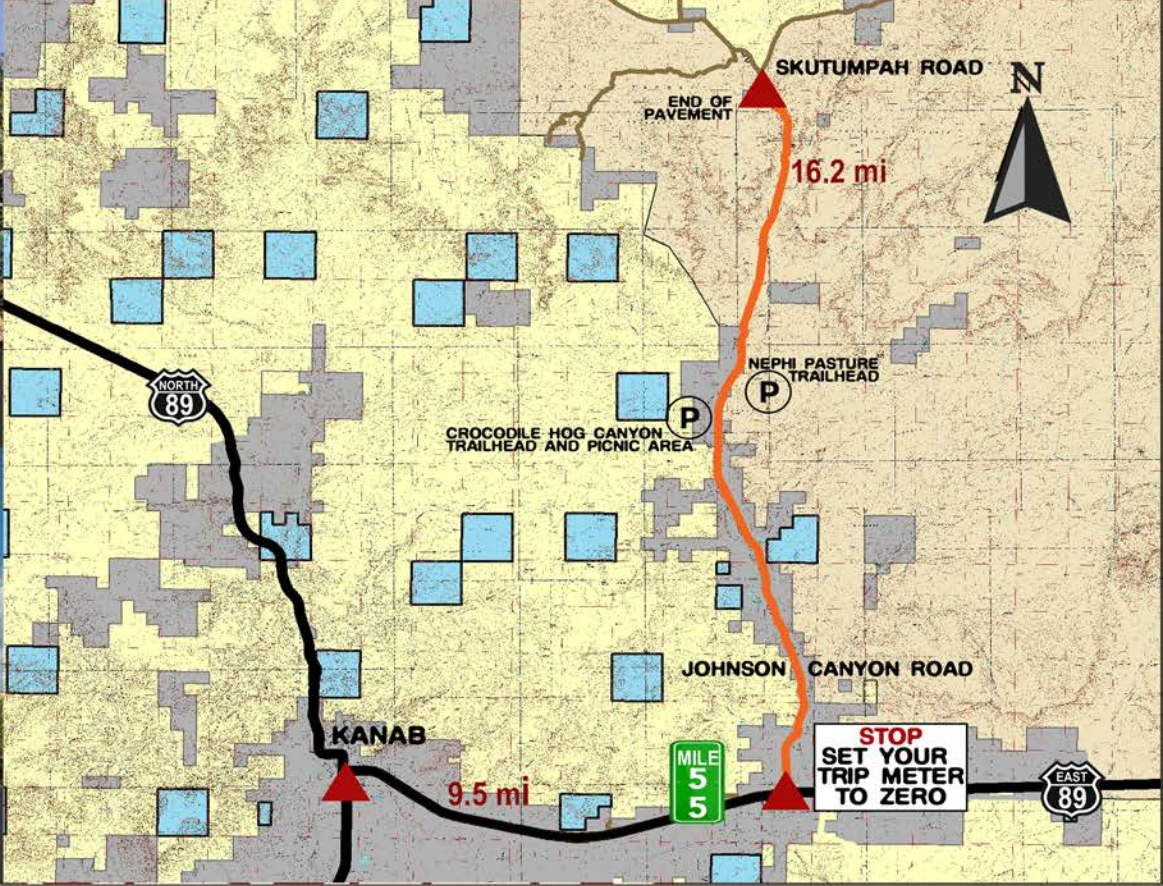
JOHNSON CANYON DRIVING TOUR



2.6 mi **On the left: "The Lion's Head"**



3.1 mi **On the right: "Eagle Gate Arch"**



Johnson Canyon is a delightful scenic drive that will refresh the soul. You will quickly see why Hollywood used this beautiful canyon as a backdrop for several movies. After turning onto Johnson Canyon Road, stop and reset your car's trip meter to 0.0 miles and enjoy your drive to the following sites. Most points of interest are on private property, but can be easily enjoyed from the road. Bring binoculars to view the Indian and cowboy glyphs. The tour ends where the pavement turns to dirt. Turn around and enjoy again the sites of Johnson Canyon.

HIGHLIGHTS:

- #4- Dairy Canyon. Several important Indian artifacts have been found in this area and can be seen at the Kanab Heritage Museum in Kanab (260 N 200 W). Call 435 644-3966 for hours.
- #5- "Gunsmoke Set". In years past, this movie sets has been used for numerous Westerns, including several episodes of the popular "Gunsmoke" TV series.
- #9 & #13- These ATV/OHV trailheads are the gateway to some great off-road adventures.
- #14- In 1914 Freddie Crystal rode into Kanab with a map that indicated that Montezuma had secreted his treasures to a cave in this canyon. Locals pitched tents and began digging. They discovered multiple chambers, side passages, artifacts and petroglyphs but alas, no gold in those White Cliffs. Yet, the legend continues.
- #14- The Grand Staircase-Escalante National Monument. You are now entering the southern boundary of the largest National Monument in America. Almost 2 million acres of backcountry adventures: slot canyons, dinosaur fossils, canyoneering, and solitude.





3
3.6 mi On the right: Pioneer grave



4
5.4 mi On the left: Dairy Canyon



5
5.4 mi On the right: "Old Guns Smoke Movie Set" (1955-1975)



6
Great view of the White Mountains



7
5.5 mi On the right: Pioneer farm and equipment



8
7.0 mi On the right: Sunflowers in the summer fields



9
7.5 mi On the left: Crocodile/Hog Canyon trailhead and picnicking



10
7.9 miles On the right: Bunting Ranches



11
7.9 mi On the right: "Indian Writings" and "Cowboy Glyphs"



12
7.9 mi On the right: Pioneer Billboard and Indian Writings



13
9.1 mi On the right: Nephi Pasture 4WD Trailhead



14
11 mi Grand Staircase Escalante, the canyon to Montezuma's Cave



15
11.8 mi On the left: Swapp Canyon



16
11.8 mi On the right: Beautiful sunsets and night skies



17
15.4 mi The right: End of pavement, beginning of backcountry adventure